



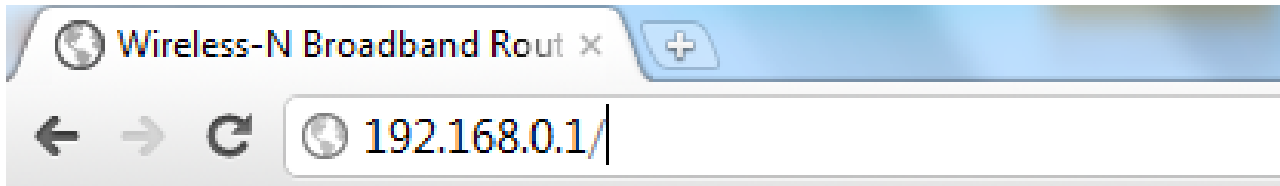
Wi-Fi settings for MT-Link WR760N

Basic Setup

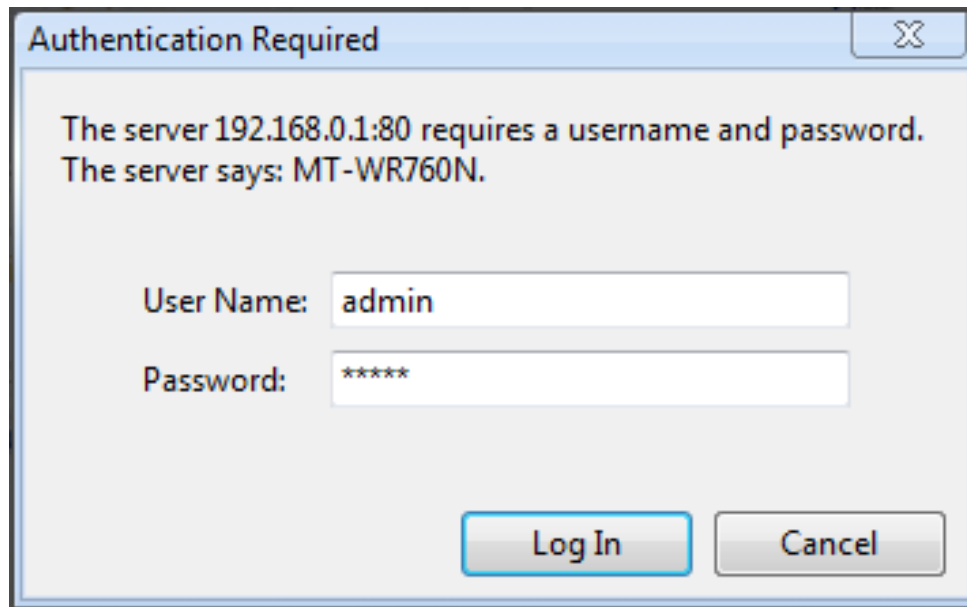
- **Switch on the Wi-Fi router**
- **Connect one end of the LAN cable into the LAN1 port of the Wi-Fi router.**
- **Connect other end of the LAN cable in your computer's LAN/Ethernet port**

Wi-Fi Settings

- In the address bar of your browser , type 192.168.0.1 and press the Enter key.



- In the window that appears requesting a username and password enter the username “admin” and the password “admin” and click login.



- Status
- Quick Setup
- WPS Settings
- Network
- Wireless** 
- DHCP
- Forwarding
- Security
- Static Routing
- QOS Settings
- Dynamic DNS
- System Tools

Version	
Hardware Version:	MT-WR760N
Firmware Version:	APR-R4A4-V1.1.345EN-MT-Link(MT-WR760N),2011.07.13 14:59.
WAN	
Connection Type:	DHCP (dynamic)
MAC Address:	08:10:75:b5:29:a2
IP Address:	0.0.0.0
Subnet Mask:	0.0.0.0
Default Gateway:	0.0.0.0
Primary DNS:	
Secondary DNS:	
Link Status:	Disconnected <input type="button" value="Connect"/>
LAN	
MAC Address:	08:10:75:b5:29:a1
IP Address:	192.168.0.1
Subnet Mask:	255.255.255.0
DHCP Server:	Enable

WAN
This feature provides the running status information of the WAN port (the port connects to the Internet).

[More.....](#)

LAN
This item provides the information of the LAN port of the router, display the MAC address of the LAN port, IP address and current situation of the DHCP server.


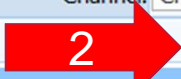
Wireless
This item provides the current running information of the Wireless.

[More.....](#)

Router Status
This item provides the current running information of the System.

- On the left side of the screen click on “Wireless” Settings

- Status
- Quick Setup
- WPS Settings
- Network
- Wireless
 - Wireless Settings**
 - Wireless Security
 - Wireless MAC Filtering
 - WDS Settings
 - Wireless Advanced
 - Wireless Statistics
 - Multiple AP Settings
- DHCP
- Forwarding
- Security
- Static Routing
- QOS Settings
- Dynamic DNS
- System Tools

Wireless Settings	
Wireless Status:	<input checked="" type="radio"/> Enable <input type="radio"/> Disable
SSID:	Home 
Radio Band:	802.11b+g+n
Radio Mode:	Access Point
MAC:	08:10:75:b5:29:a1
SSID Broadcast:	<input checked="" type="radio"/> Enable <input type="radio"/> Disable
Channel Width:	<input type="radio"/> 20MHZ <input checked="" type="radio"/> 40MHZ
Control Sideband:	<input checked="" type="radio"/> Lower <input type="radio"/> Upper
Channel:	Channel 6
 <input type="button" value="Save"/>	

Wireless Settings

The wireless router supplies two AP, and it has both the normal functions and some extra functions such as advanced setting and access control. You can manage and configure your primary AP.

More.....

- 1. In SSID enter the preferred name for your wireless network.**
- 2. After entering the network name click Save**

- ▣ Status
- ▣ Quick Setup
- ▣ WPS Settings
- ⊕ Network
- ▣ Wireless
 - ▣ Wireless Settings
 - ▣ **Wireless Security**
 - ▣ Wireless MAC Filtering
 - ▣ WDS Settings
 - ▣ Wireless Advanced
 - ▣ Wireless Statistics
 - ▣ Multiple AP Settings
- ⊕ DHCP
- ⊕ Forwarding
- ⊕ Security
- ▣ Static Routing
- ▣ QOS Settings
- ▣ Dynamic DNS
- ⊕ System Tools

Wireless Security

For the security of your wireless network, we strongly recommend you to use the authentication type of WPA2-PSK, encryption type of AES or authentication type of WPA2-PSK, encryption type of TKIP&AES

Authentication Type: None

- None
- WEP
- WPA-PSK
- WPA2-PSK
- WPA/WPA2-PSK**

WEP

You can select ASCII characters (alphanumeric) or Hexadecimal ('A-F', 'a-f' and '0-9'). For 64-bit WEP, input 10 Hex values (in the 'A-F', 'a-f' and '0-9' range) or 5 ASCII characters. For 128-bit WEP, input 26 Hex values (in the 'A-F', 'a-f' and '0-9' range) or 13 ASCII characters.

WPA/ WPA2/ WPA&WPA2

You can select ASCII (alphanumeric format) or Hexadecimal ('A-F', 'a-f' and '0-9'). You need to input 64 values for Hex, or 8-63 ASCII characters.

More.....

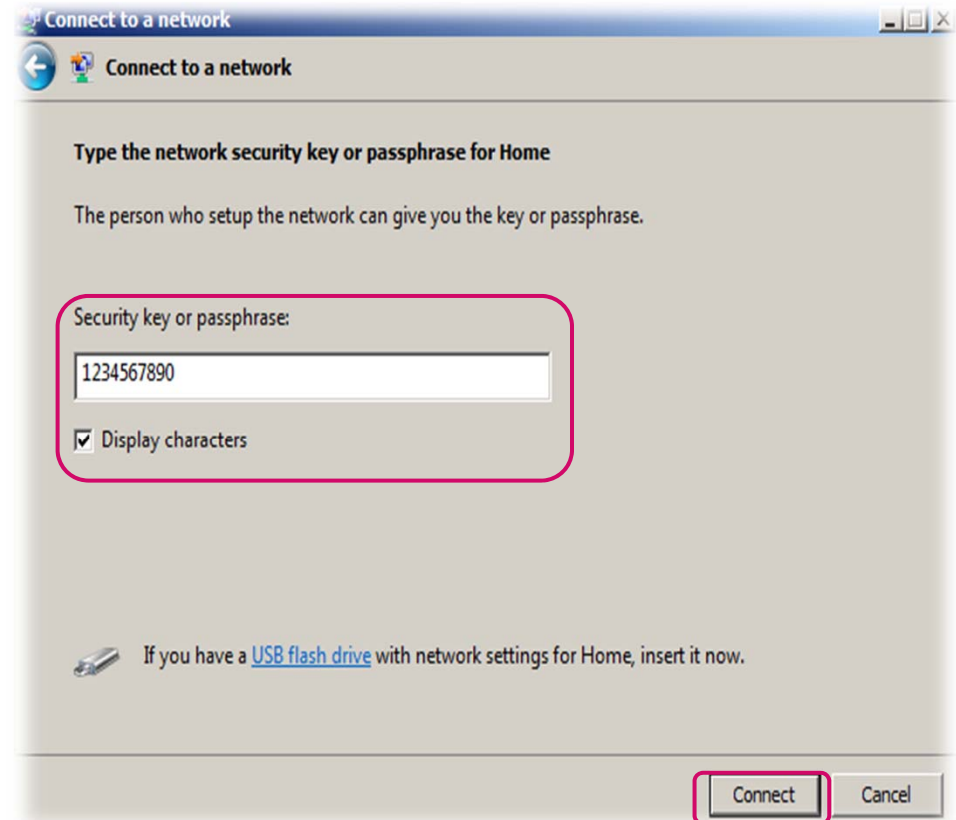
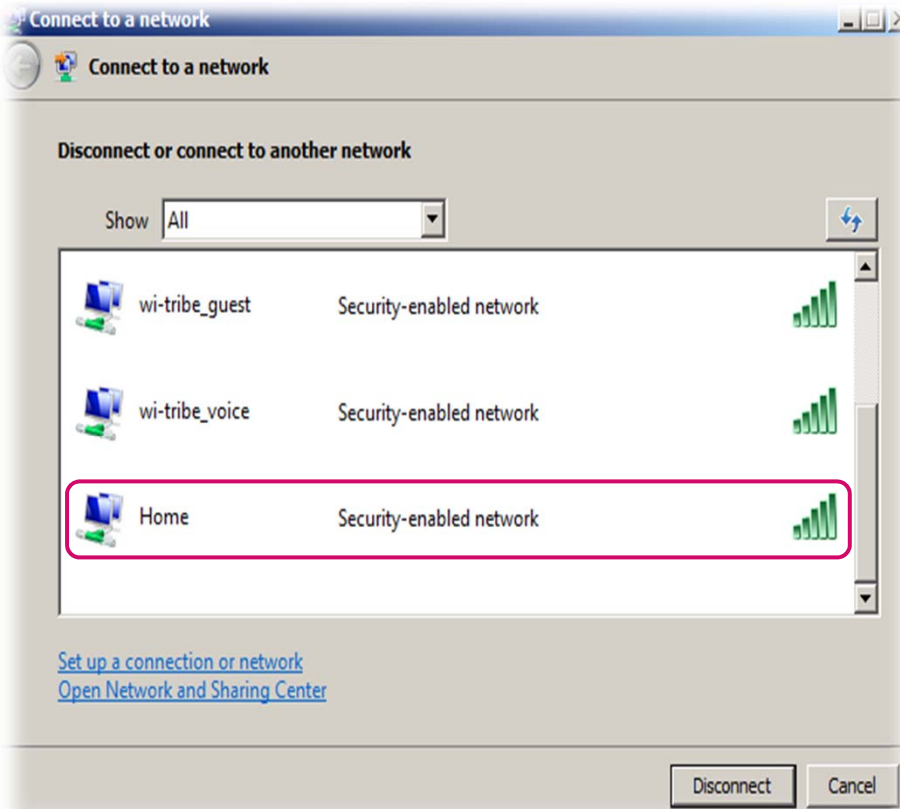
1. To set the network key and to secure your network, click on “wireless security”
2. In the ‘Authentication type’ menu and select ‘WPA/WPA2-PSK’

Wireless Security

For the security of your wireless network, we strongly recommend you to use the authentication type of WPA2-PSK, encryption type of AES or authentication type of WPA2-PSK, encryption type of TKIP&AES

Authentication Type:	<input type="text" value="WPA/WPA2-PSK"/>
Encryption Type:	<input checked="" type="radio"/> TKIP <input type="radio"/> AES <input type="radio"/> TKIP & AES
Key Mode:	<input type="radio"/> HEX <input checked="" type="radio"/> ASCII
Key:	<input type="text" value="mtlink123"/> (please enter any 8-63 charcters (ASCII charcters:A-Z,a-z,0-9))
Key Renewal:	<input type="text" value="86400"/> seconds(60-86400)
	<input type="button" value="Save"/>

1. In 'Key', enter your preferred network key (minimum 8 characters long)
2. Click on Save and close the window.



- **Unplug the LAN cable from your computer and**
- **Search for wireless networks**
- **Enter the Network Key and press Connect**
- **The wireless network setup is now complete**

Thank you for choosing wi-tribe