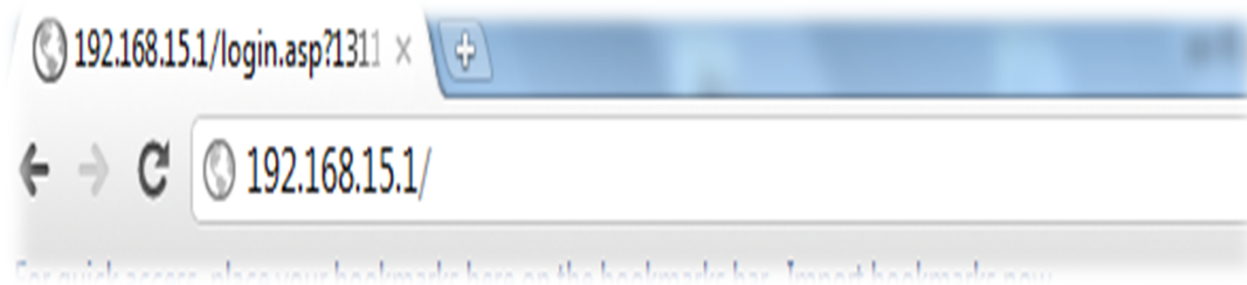


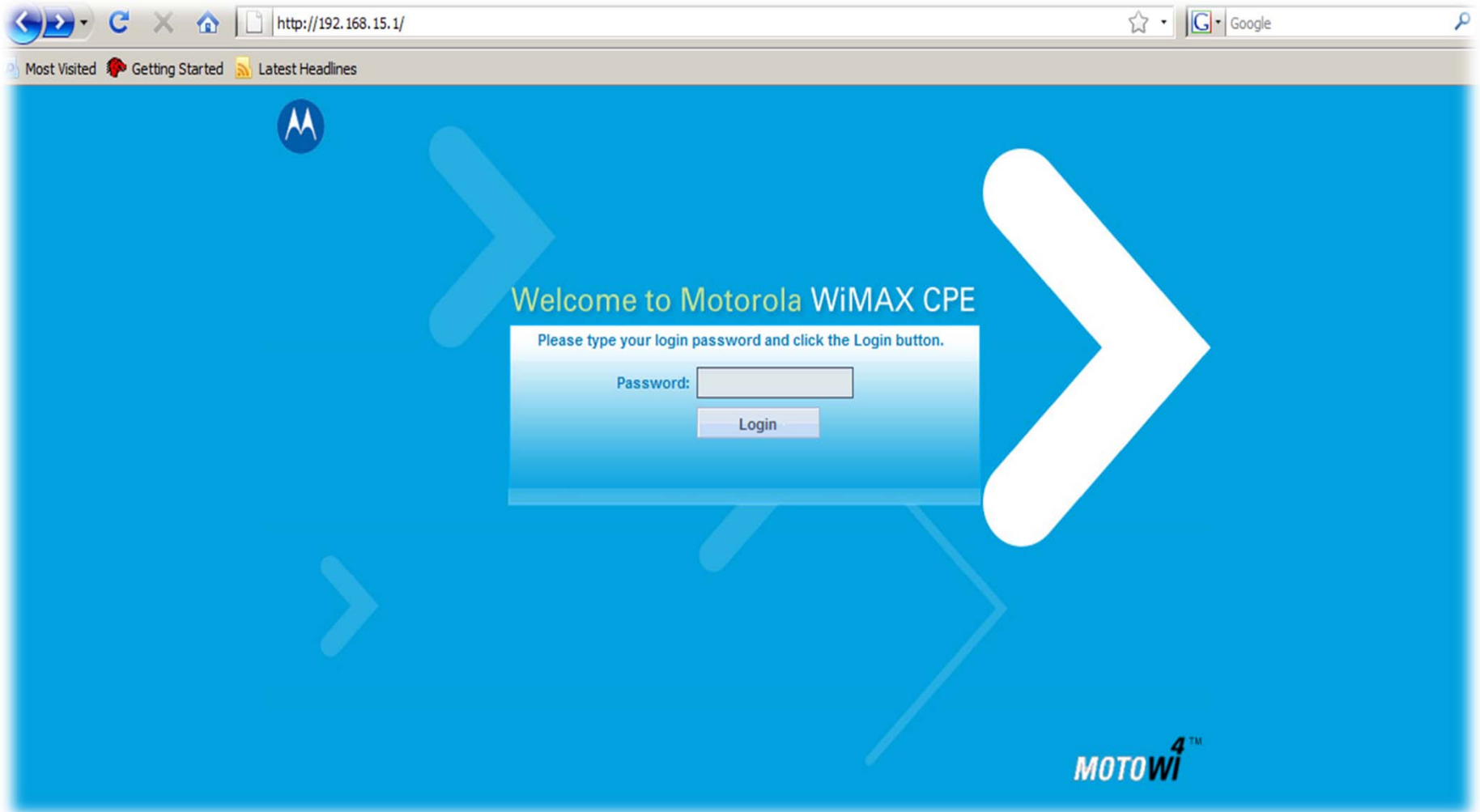
Create Your Own World



How to secure your Motorola Wi-Fi modem

- **After setting up the wi-tribe Wi-Fi modem:**
 - **Connect one end of the LAN cable in your computer LAN/Ethernet port,**
 - **Connect the other end into the back of the Wi-Fi modem**
 - **Open your internet browser window and type 192.168.15.1 in the address bar and press ‘Enter’**





- Type in the password “motorola” in lower case alphabets and click ‘Login’ to continue.

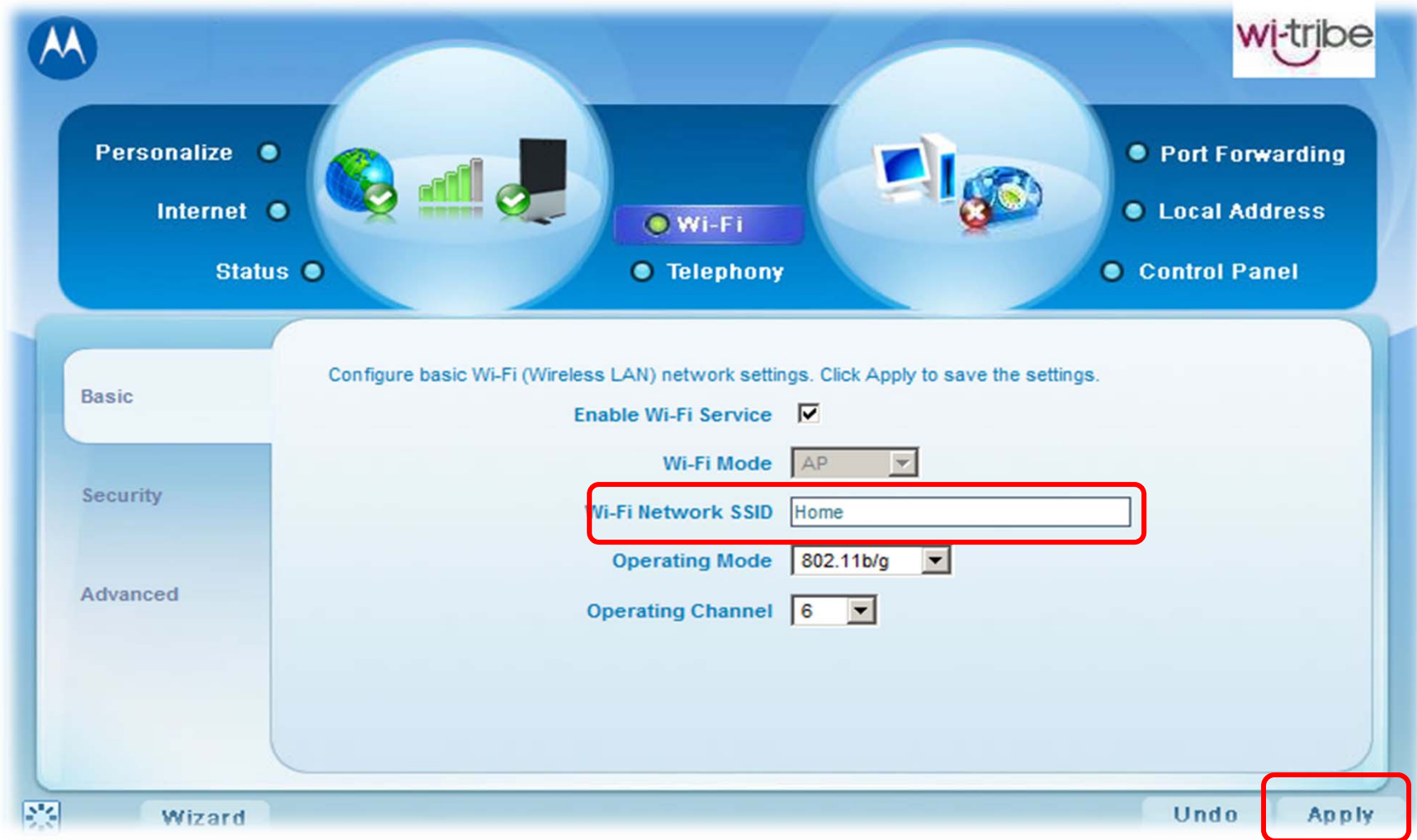
Personalize **Internet** **Status** **Wi-Fi** **Telephony** **Port Forwarding** **Local Address** **Control Panel**

Shows the status of the WiMAX wireless broadband Internet connection.

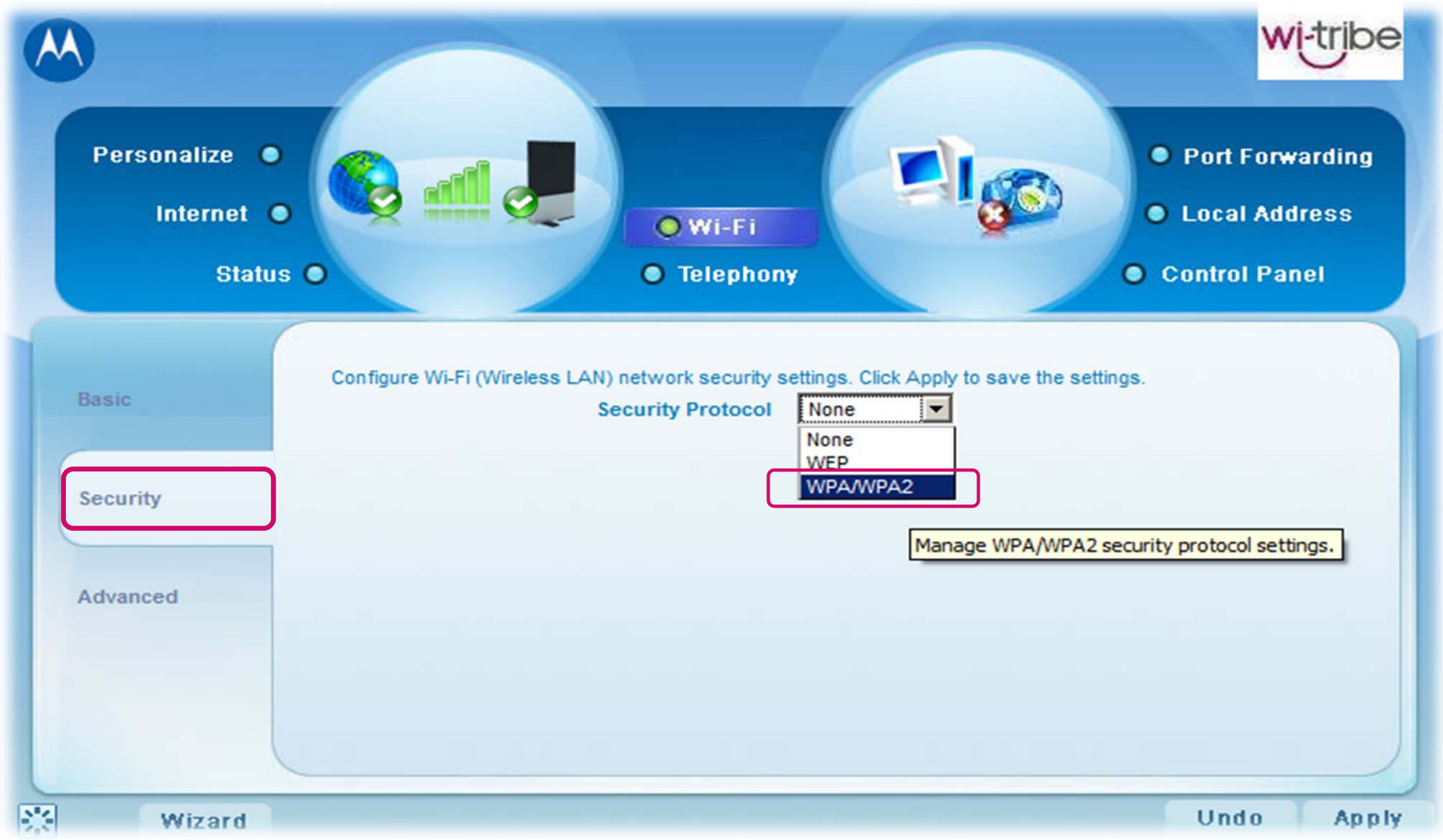
WiMAX Radio Interface: enabled	Gateway Mode: enabled
WiMAX Radio Overheat: none	IP Address: 115.167.21.251
WiMAX Radio Temperature: 44 C	IP Subnet Mask: 255.255.240.0
WiMAX Service Provider: 00:00:0F	IP Default Gateway: 115.167.16.1
WiMAX Network State: associated	IP Connection: connected
WiMAX Network Status: Authorization	Firewall: on
WiMAX Network Security: authorized	Lease Obtained: Tue Jan 02 01:27:52 2007
WiMAX Provisioning State: provisioned	Lease Expires: 0day 0hr 53min 27sec
WiMAX RSSI: -72 dBm	DNS Servers: 115.167.72.254 , 115.167.73.254
WiMAX CINR: 20 dB	Time Server: pool.ntp.org
WiMAX Downlink Throughput: 3 kbps	EMS Server: isb-dcn-cgems-1.wi-tribe.net.pk
WiMAX Uplink Throughput: 7 kbps	EMS Bootstrap: No
WiMAX Packets Received: 122878	Device Up Time: 23 hr 34 min

Wizard **Refresh** **Auto Refresh**

- Click on **Wi-Fi**



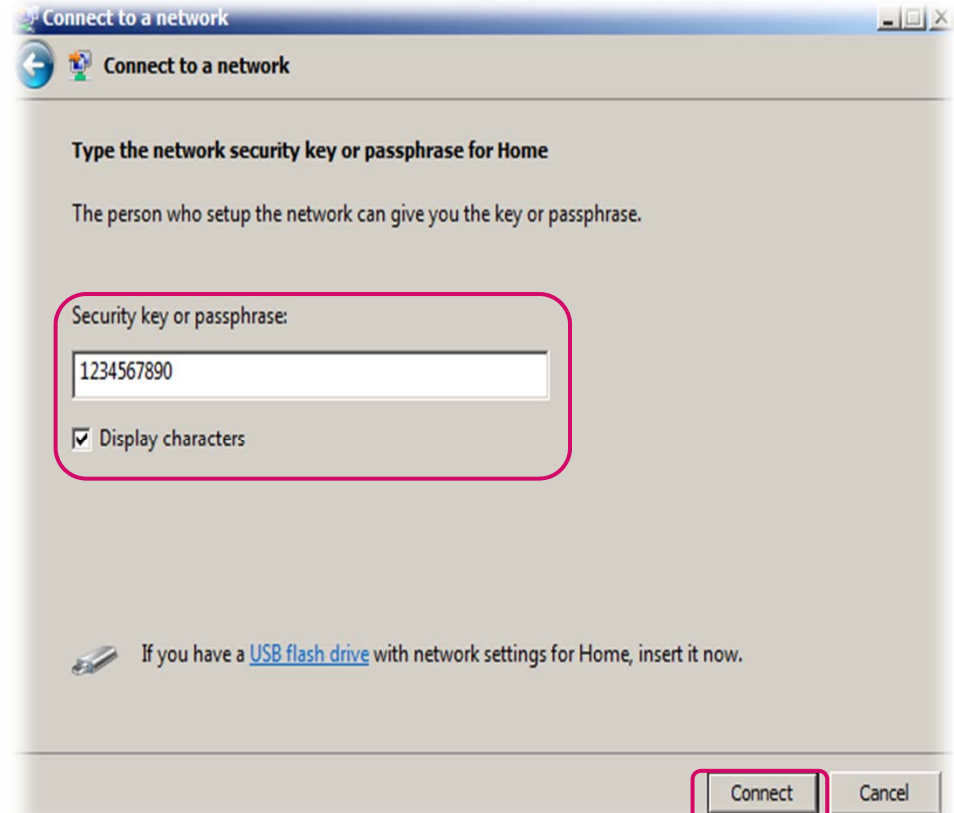
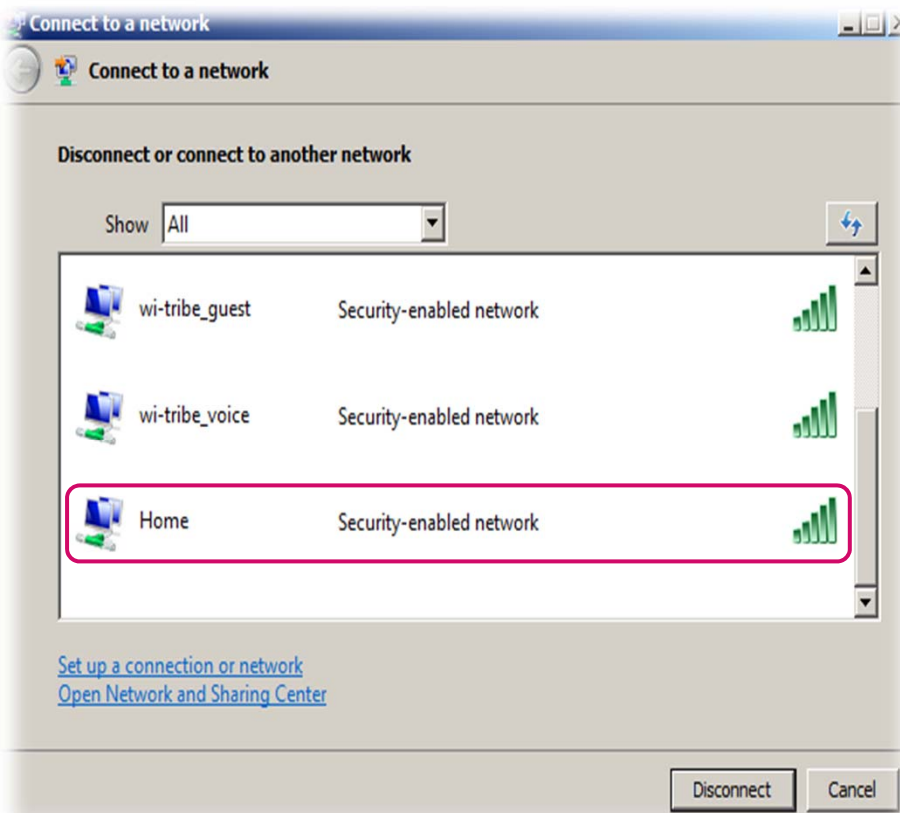
- In 'Wi-Fi Network SSID', enter the preferred name for your wireless network.
- After setting the network name, click "APPLY"



- To set the network key and to secure your network, click on the 'Security' tab
- Choose 'WPA/WPA2' from the dropdown list.



- In 'WPA Shared Key', enter your preferred network key (minimum 8 characters long)
- Click 'APPLY'



- **Unplug the LAN cable from your computer and search for wireless networks**
- **Connect to the network you have just set up**
- **Enter the network key and click 'Connect'**
- **The wireless network setup is now complete**

Thank you

Create Your Own World
wi-tribe

The logo for wi-tribe features the text "wi-tribe" in a bold, lowercase, sans-serif font. The "i" in "wi" has a dot. Below the "i" and "t" is a thick, dark red curved line that forms a partial smile or a stylized "u" shape.