



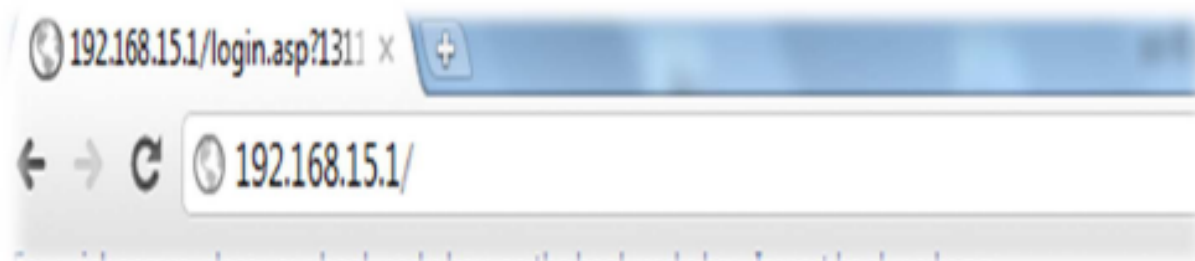
# How to Secure Your wi-tribe Wi-Fi Modem

# Select your device

- **If you have a single port device, click here**
- **If you have a device with 2 ports, click here**

## Basic Setup (for single port device)

- **After setting up the wi-tribe Wi-Fi modem:**
  - **Connect one end of the LAN cable in your computer's LAN/Ethernet port**
  - **Connect the other end into the back of the Wi-Fi modem**
  - **Open your internet browser window, type 192.168.15.1 in the address bar and press 'Enter'**



**Welcome to your modem  
configuration interface.  
Enter the password supplied in  
the device Quick Start Guide**

**Password**

**LOGIN**

- In the password field type 'witribe' in lower case alphabets
- Click 'LOGIN' to continue

The screenshot shows a web-based configuration interface for WiMAX. On the left is a navigation sidebar with the following items: Personalize, Internet (highlighted with a red border), Local Address, Port Forwarding, Control Panel, and Status. Below the sidebar are three buttons: REBOOT, LOGOUT, and RECONNECT. The main content area is titled 'Wireless Settings' and contains the following fields:

- Interface status: Disable
- Country Code: ETSI
- Network Name(SSID): wi-tribe-Digital
- Radio Channel: 1
- Working Mode: 802.11b/g
- Transmit Power: Full
- RTS Threshold: 2432 (range: 256~2432)
- CTS Protect Mode: Auto
- Preamble Length: short Preamble
- SSID Suppress: Disable

Below the Wireless Settings is the 'Security' section, which includes a 'Security Types Setup' sub-section with the following fields:

- Authentication: WPA-WPA2-Mixed PSK
- Encryption: TKIP

At the bottom of the Security section are two buttons: Undo and Apply.

- After logging in , click on 'Internet'

Personalize  
**Internet**  
Local Address  
Port Forwarding  
Control Panel  
Status

REBOOT  
LOGOUT  
RECONNECT

Wireless Settings

Interface status **Disable**  
Country Code ETSI  
Network Name(SSID) wi-tribe-Digital  
Radio Channel 1  
Working Mode 802.11b/g  
Transmit Power Full  
RTS Threshold 2432 (range:256~2432)  
CTS Protect Mode Auto  
Preamble Length short Preamble  
SSID Suppress Disable

Security

Security Types Setup

Authentication WPA-WPA2-Mixed PSK  
Encryption TKIP

Undo Apply

.....and then click on 'Wireless'

Personalize

**Internet**

Local Address

Port Forwarding

Control Panel

Status

**REBOOT**

**LOGOUT**

**RECONNECT**

**Wireless Settings**

Interface status

Country Code

**Network Name(SSID)**

Radio Channel

Working Mode

Transmit Power

RTS Threshold  (range:256~2432)

CTS Protect Mode

Preamble Length

SSID Suppress

---

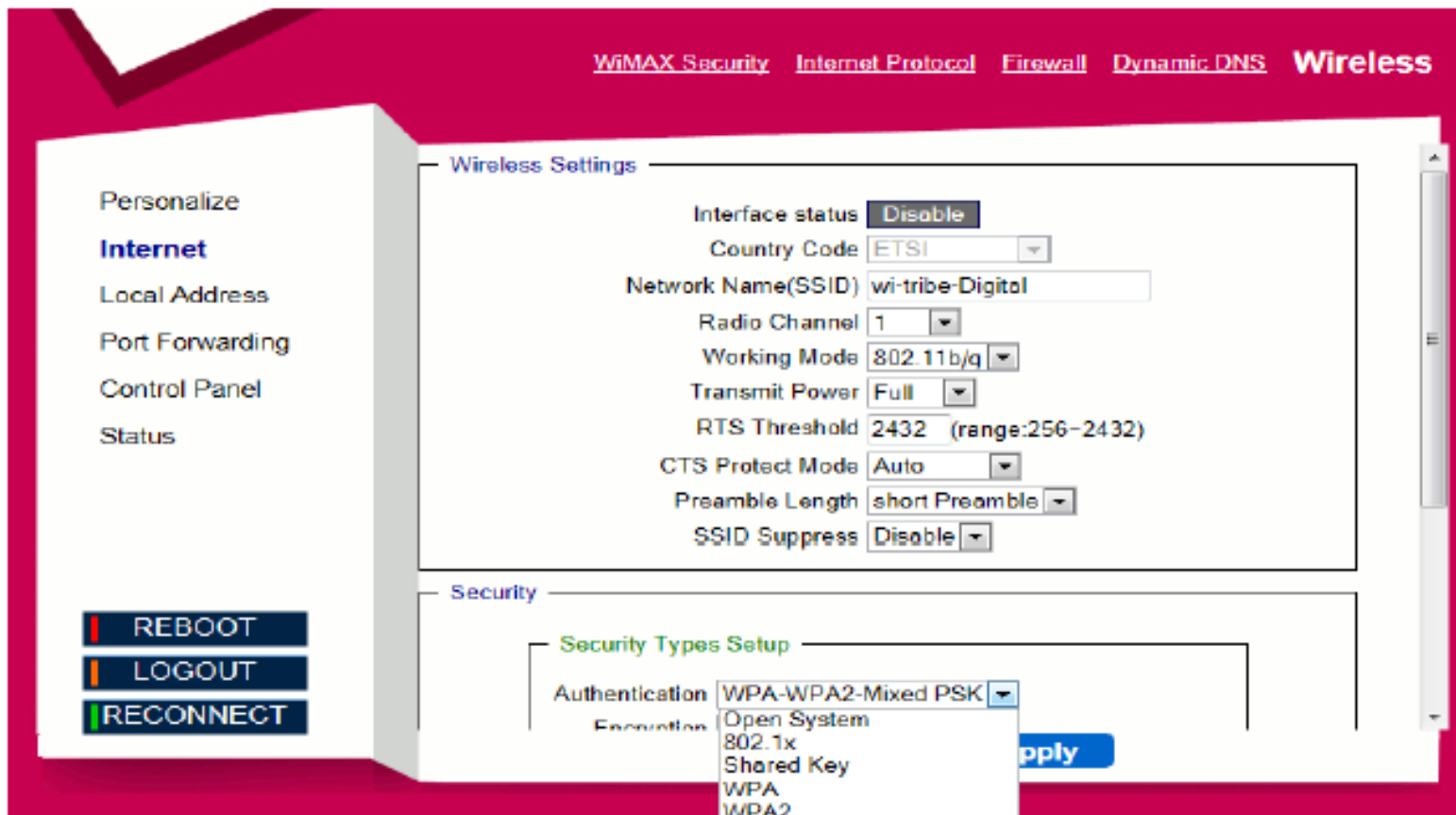
**Security**

**Security Types Setup**

Authentication

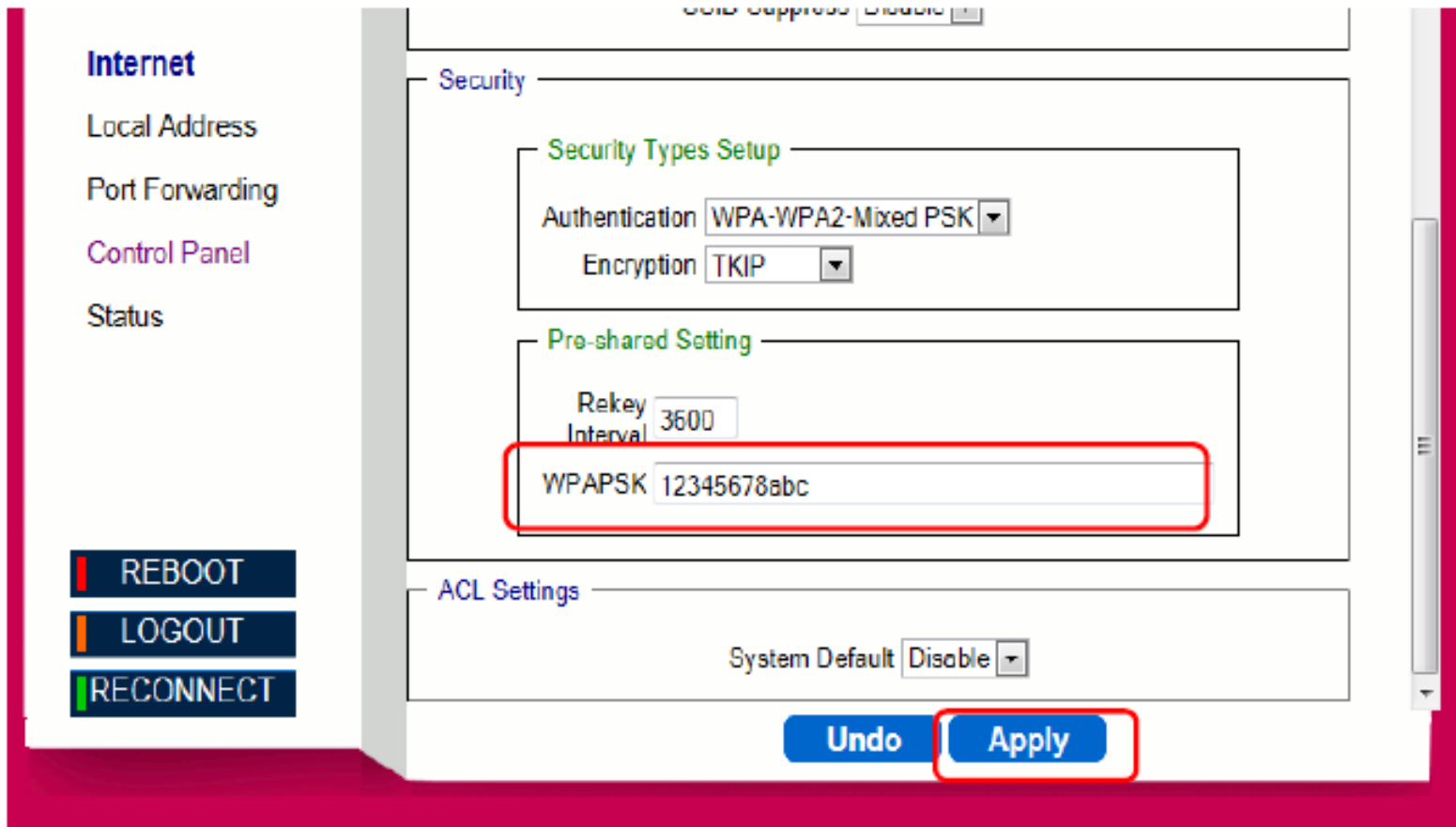
Encryption

- In 'Network Name(SSID)', enter the preferred name for your wireless network.
- After setting the network name click 'Apply'

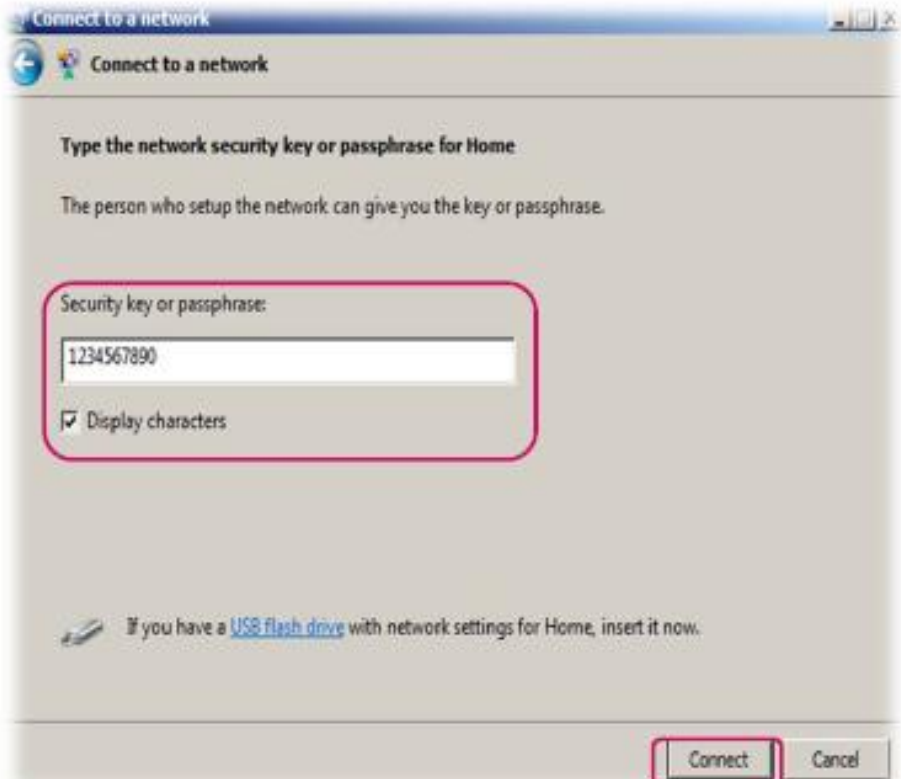


- To set the network key and to secure your network, click the dropdown list in the 'Authentication' menu and select choose 'WPA-WPA2-Mixed PSK'





- In 'WPAPSK', enter your preferred network key (minimum 8 characters long)
- Click 'APPLY'



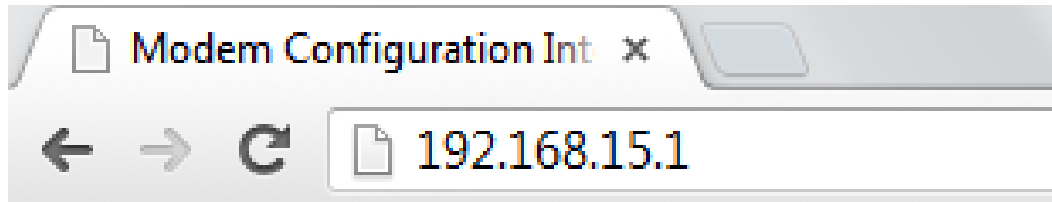
- **Unplug the LAN cable from your computer and search for wireless networks**
- **Connect to the network you have set-up**
- **Enter the 'Network Key' and press 'OK'**
- **Congratulations! Your wireless network setup is complete**

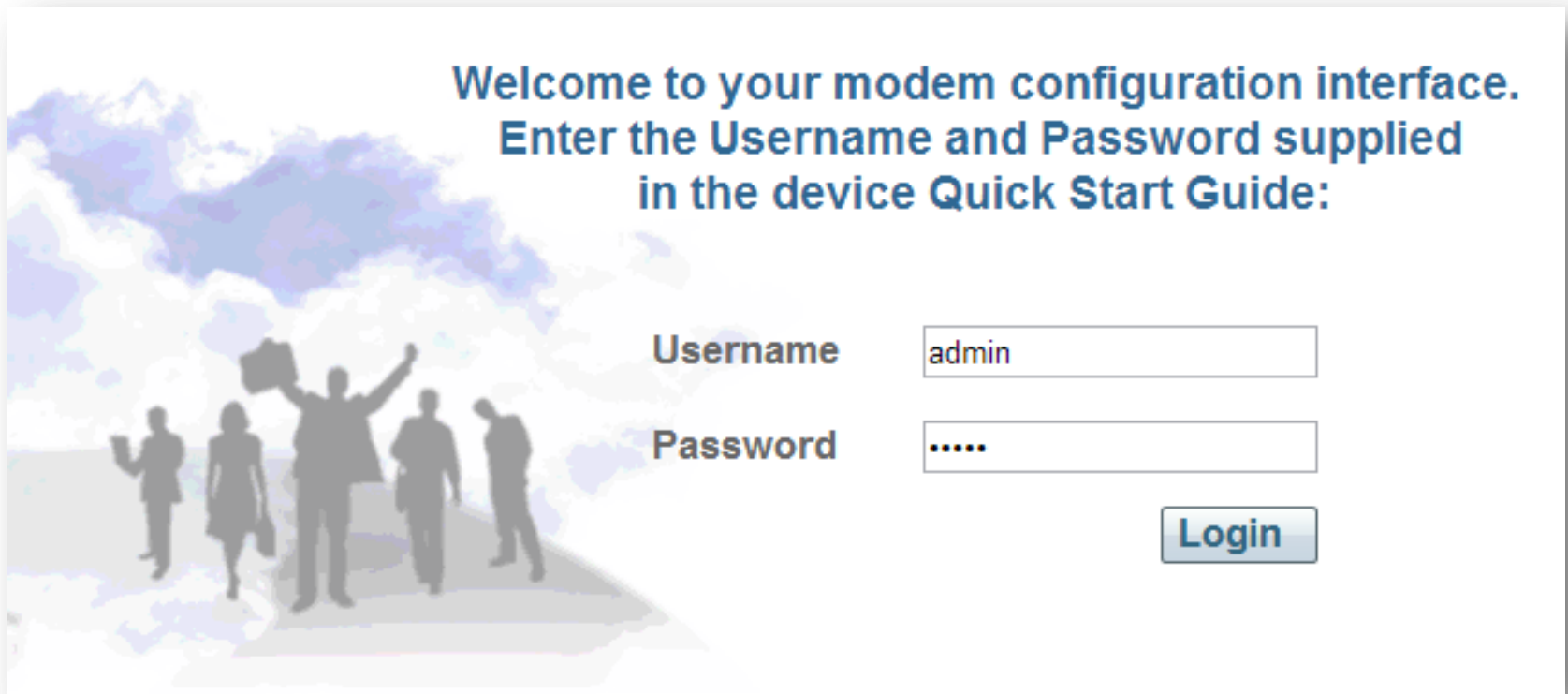
## Basic Setup (for device with 2 ports)

- **Switch on the Wi-Fi router**
- **Connect one end of the LAN cable into the LAN1 port of the Wi-Fi router.**
- **Connect other end of the LAN cable in your computer's LAN/Ethernet port**

## Wi-Fi Settings

- In the address bar of your browser , type **192.168.15.1** and press the 'Enter' key.





- On Login screen enter
  - Username as “admin”
  - Password as “admin”
- Click ‘Login’ to continue

### Device Status

Device Status

WiMAX Status

About

<b>Operation Mode</b>	Router	<b>IP Connection</b>	ON
<b>Connection Mode</b>	DHCP	<b>IP Address</b>	115.167.36.74
<b>Wi-Fi Network Name</b>	witribe_wifi	<b>IP Subnet Mask</b>	255.255.192.0
<b>Firewall</b>	ON	<b>IP Default Gateway</b>	115.167.16.1
<b>DMZ</b>	DISABLE	<b>DNS Server</b>	115.167.72.131
<b>UPnP</b>	ENABLE		115.167.72.130
<b>DDNS</b>	DISABLE		115.167.72.254
<b>Device Up Time</b>	0hour 39minute 32second	<b>Time Server</b>	115.167.72.254
<b>Connection Time</b>	0hour 38minute 41second		115.167.73.254
<b>Device Restart Reason</b>	Device auto		115.167.74.254
		<b>Lease Obtained-Date</b>	
		<b>Lease Expires-Date</b>	

Refresh

Auto

Help

[Mobile](#) Classic

- Click on 'Management' in the window that appears

Create Your Own World  
wi-tribe

Status | **Management** | Personalization | Basic | Advanced |

WAN Setup

WAN Setup  
DHCP Server  
**Wi-Fi Setup**  
Diagnostics

WAN Setup

Operation Mode Router

Connection Mode DHCP

MTU Size Auto(1400)

Undo Apply Help

[Mobile Classic](#)

- Select 'Wi-Fi Setup' from the left corner of the window

## Wi-Fi Setup

### ▼ Basic

Enable Wi-Fi Interface



Network Name(SSID)

preferred network name

Authentication

Open System

Encryption

WEP

Default Key

1

Wi-Fi Password Type

64bits

HEX

Key

abcde12345

▶ Advanced

▶ ACL Settings

▼ WPS

Undo

Apply

Help

[Mobile](#) Classic

- In 'Network Name(SSID)' enter preferred name of your Wi-Fi network



## Wi-Fi Setup

### ▼ Basic

Enable Wi-Fi Interface



Network Name(SSID)

Authentication

Open System

Encryption

WEP

Default Key

1

Wi-Fi Password Type

64bits - HEX

Key

▶ Advanced

▶ ACL Settings

▼ WPS

Undo

Apply

Help

[Mobile](#) Classic

- In 'Authentication' select "Open System" from the drop down

## Wi-Fi Setup

### ▼ Basic

Enable Wi-Fi Interface



Network Name(SSID)

Authentication

Encryption

Default Key

Wi-Fi Password Type

-

Key

▶ Advanced

▶ ACL Settings

▼ WPS

Undo

Apply

Help

[Mobile](#) Classic

- In 'Encryption' select "WEP" from the drop down

## Wi-Fi Setup

### ▼ Basic

Enable Wi-Fi Interface



Network Name(SSID)

Authentication

Encryption

Default Key

Wi-Fi Password Type

 - 

Key

▶ Advanced

▶ ACL Settings

▼ WPS

Undo

Apply

Help

[Mobile](#) Classic

- Select 'Default Key' as "1" from the drop down

## Wi-Fi Setup

### ▼ Basic

Enable Wi-Fi Interface



Network Name(SSID)

Authentication

Encryption

Default Key

Wi-Fi Password Type

Key

▶ Advanced

▶ ACL Settings

▼ WPS

Undo

Apply

Help

[Mobile](#) Classic

- In 'Wi-Fi Password Type' select "64bits" and "HEX" from the drop down, as shown

## Wi-Fi Setup

### ▼ Basic

Enable Wi-Fi Interface



Network Name (SSID)

Authentication

Encryption

Default Key

Wi-Fi Password Type

 - 

Key

▶ Advanced

▶ ACL Settings

▼ WPS

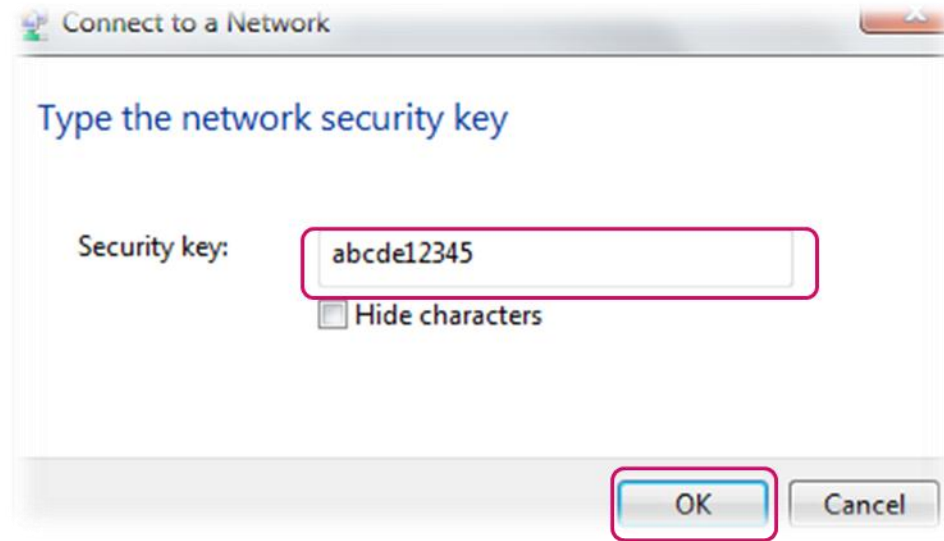
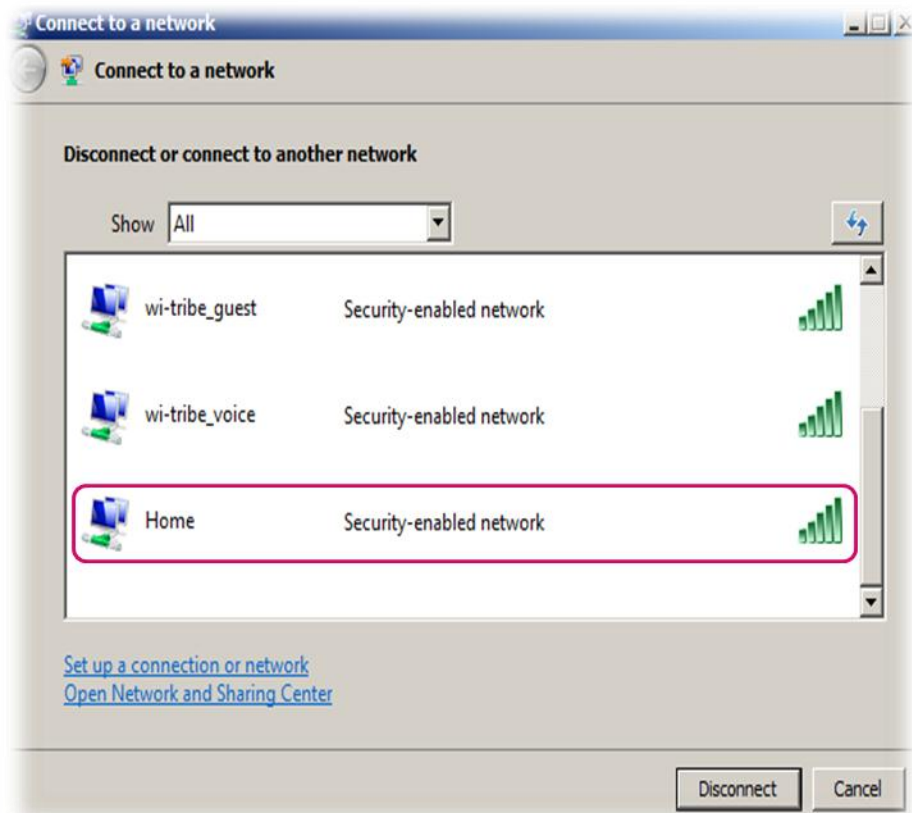
Undo

Apply

Help

[Mobile](#) Classic

- In 'Key', enter your alpha-numeric password (10 characters long)
- Click on 'Apply' and close the window



- **Unplug the LAN cable from your computer and search for wireless networks**
- **Connect to the network you have set-up**
- **Enter the 'Network Key' and press 'OK'**
- **Congratulations! Your wireless network setup is complete**

**Thank you**